



New Gold Zone Identified from Extensional Drilling

- Results received for 11 holes from infill and extensional drilling at the Ternerá Deposit.
- Multiple high-grade intercepts returned from five extensional drillholes, further expanding Ternerá to the east and identifying additional gold zones, including:
 - **ZDDH0115**
 - 7.00m @ 1.00g/t Au from 312.00m including:
 - 1.00m @ 3.33g/t Au from 312.00m.
 - **ZDDH0116**
 - 1.00m @ 5.76g/t Au from 59.00m.
 - **ZDDH0117**
 - 10.20m @ 0.65g/t Au from 190.80m including:
 - 0.70m @ 5.03g/t Au from 190.80m; and
 - 13.00m @ 0.88g/t from 268.00m including:
 - 1.00m @ 4.12g/t Au from 280.00m.
 - **ZDDH0119**
 - 19.00m @ 1.22g/t Au from 355.00m including:
 - 4.50m @ 2.97g/t Au from 355.00m; and
 - 1.00m @ 4.22g/t Au from 373.00m.
 - **ZDDH0120**
 - 3.00m @ 1.57g/t Au from 229.00m; and
 - 1.00m @ 15.30g/t Au from 317.00m.
 - **ZDDH0121**
 - 0.70m @ 3.27g/t Au from 72.50m
 - 1.50m @ 2.31g/t Au from 86.50m; and
 - 1.00m @ 2.94g/t Au from 230.00m.
- Consistent results continue to be returned for infill drilling which continue to confirm continuity of mineralisation through the Ternerá Deposit; results include:
 - **ZDDH0112**
 - 1.00m @ 11.90g/t Au from 154.00m.
 - **ZDDH0114**
 - 6.00m @ 2.29g/t Au from 223.00m including:
 - 3.00m @ 4.36g/t Au from 280.00m.
 - **ZDDH0123**
 - 28.00m @ 0.87g/t Au from 70.00m including:
 - 2.93m @ 5.38g/t Au from 84.07m;
 - 6.00m @ 1.51g/t Au from 215.00m; and
 - 1.00m @ 3.55g/t Au from 360.00m.

- In total, Tesoro has drilled 150 diamond drillholes at El Zorro for 47,208 metres.
- Assays remain outstanding for 35 holes.
- Geological modelling is well advanced in preparation for calculation of a Maiden Resource Estimate (**MRE**) for the Ternera Deposit in the coming months.
- Ternera gold mineralisation remains open in all directions and drilling continues with six drill rigs operating 24/7.
- Detailed metallurgical testwork samples have been dispatched to the laboratory for advanced testwork.

Tesoro Resources Limited (Tesoro or the Company) (ASX:TSO) is pleased to announce assay results from extensional and resource definition drilling from the Ternera Gold Deposit (**Ternera**) at the Company's El Zorro Gold Project (**El Zorro**) in Chile.

Assays have been received for eleven (11) drillholes at Ternera, six (6) extensional holes targeting the eastern margin of the deposit and five (5) infill/resource definition holes.

Significant intercepts are presented in Table 1. All significant intercepts from El Zorro are presented in Appendix 1 of this announcement.

Tesoro Managing Director, Zeff Reeves commented:

"Drilling continues to expand the mineralised zones at Ternera. These latest set of results confirm our interpretation that gold mineralisation continues from the main Ternera Deposit to the recently discovered Ternera East Prospect. Infill results continue to add gold grade to the Ternera model which is in preparation for a MRE in the coming months."

Commentary

Holes ZDDH0112, ZDDH0114, ZDDH0118, ZDDH0120, ZDDH 0122 and ZDDH0123 were all drilled to further test and extend the eastern margin of the Ternera Deposit.

Hole ZDDH0115 in particular, is significant as it has extended the Ternera mineralised zone approximately 150m east and 100m south with gold mineralisation associated with a controlling north-south fault.

Hole ZDDH0118 did not return any significant gold mineralisation confirming that the Ternera Deposit host lithology is not present in this area. Current interpretation and recent drilling suggest the main mineralised zone continues in a north-east direction.

All other holes returned positive results with strongest zones of gold mineralisation associated with north-south faults intersecting the main host rock, the El Zorro Tonalite. It is interpreted that gold mineralisation will continue at least a further 200m-300m east where surface mineralisation has been identified at the Ternera East target.

Holes ZDDH0115, ZDDH0116, ZDDH0117, ZDDH0119 and ZDDH0121 were drilled as resource definition/infill holes and continue to build upon the up and down dip continuity of gold mineralisation throughout the deposit. Results confirm continuity of gold grade and continue to add new data to the advancing Maiden Resource Estimate.

Hole_ID	From (m)	To (m)	Interval	Au (g/t)	Comments
ZDDH0112	130.00	132.00	2.00	0.47	
ZDDH0112	154.00	155.00	1.00	11.90	
ZDDH0112	240.00	241.00	1.00	1.08	
ZDDH0114	26.50	27.20	0.70	0.40	
ZDDH0114	47.20	53.00	5.80	0.47	
ZDDH0114	49.00	51.00	2.00	0.85	
ZDDH0114	69.00	71.00	2.00	0.44	
ZDDH0114	97.00	106.90	9.90	0.57	
ZDDH0114	103.00	105.00	2.00	1.74	including
ZDDH0114	164.00	165.00	1.00	1.00	
ZDDH0114	223.00	229.00	6.00	2.29	
ZDDH0114	224.00	227.00	3.00	4.36	including
ZDDH0115	235.00	236.00	1.00	0.43	
ZDDH0115	311.00	318.00	7.00	1.00	
ZDDH0115	312.00	313.00	1.00	3.33	
ZDDH0116	59.00	60.00	1.00	5.76	
ZDDH0116	65.88	67.27	1.39	0.49	
ZDDH0117	162.00	163.00	1.00	1.20	
ZDDH0117	190.80	201.00	10.20	0.65	
ZDDH0117	190.80	191.50	0.70	5.03	including
ZDDH0117	198.00	201.00	3.00	1.00	including
ZDDH0117	225.00	227.00	2.00	0.46	
ZDDH0117	261.00	285.00	24.00	0.58	
ZDDH0117	268.00	281.00	13.00	0.88	including
ZDDH0117	268.00	270.00	2.00	1.50	including
ZDDH0117	280.00	281.00	1.00	4.12	including
ZDDH0118					No Significant intercept
ZDDH0119	4.60	6.60	2.00	0.52	
ZDDH0119	20.00	26.00	6.00	0.50	
ZDDH0119	20.00	21.00	1.00	1.69	
ZDDH0119	261.00	262.00	1.00	1.18	
ZDDH0119	269.00	270.00	1.00	1.48	
ZDDH0119	326.00	374.00	48.00	0.53	
ZDDH0119	350.00	374.00	24.00	1.02	including
ZDDH0119	355.00	374.00	19.00	1.22	including
ZDDH0119	355.00	359.50	4.50	2.97	including
ZDDH0119	365.00	366.00	1.00	2.64	including
ZDDH0119	373.00	374.00	1.00	4.22	including

Hole_ID	From (m)	To (m)	Interval	Au (g/t)	Comments
ZDDH0120	229.00	232.00	3.00	1.47	
ZDDH0120	317.00	318.00	1.00	15.30	
ZDDH0120	351.00	352.00	1.00	1.16	
ZDDH0120	371.00	378.00	7.00	0.61	
ZDDH0120	376.00	377.00	1.00	1.39	including
ZDDH0120	383.00	384.00	1.00	1.03	
ZDDH0120	387.00	388.00	1.00	1.27	
ZDDH0120	396.00	397.00	1.00	1.02	
ZDDH0120	412.00	415.00	3.00	0.41	
ZDDH0121	35.00	41.00	6.00	0.47	
ZDDH0121	35.00	36.00	1.00	1.07	including
ZDDH0121	60.00	91.50	31.50	0.34	
ZDDH0121	66.00	73.50	7.50	0.59	including
ZDDH0121	66.00	67.00	1.00	1.11	including
ZDDH0121	72.50	73.20	0.70	3.27	including
ZDDH0121	79.00	80.00	1.00	1.40	including
ZDDH0121	86.50	88.00	1.50	2.31	including
ZDDH0121	230.00	231.00	1.00	2.94	including
ZDDH0122	3.00	7.10	4.10	0.38	
ZDDH0122	36.50	37.39	0.89	0.87	
ZDDH0122	43.00	44.00	1.00	0.87	
ZDDH0122	85.00	85.65	0.65	1.11	
ZDDH0122	155.00	156.00	1.00	0.84	
ZDDH0123	70.00	98.00	28.00	0.87	
ZDDH0123	76.00	77.00	1.00	1.93	including
ZDDH0123	84.07	87.00	2.93	5.38	including
ZDDH0123	200.00	204.00	4.00	0.85	
ZDDH0123	203.00	204.00	1.00	1.48	including
ZDDH0123	215.00	221.00	6.00	1.51	
ZDDH0123	242.60	243.20	0.60	1.16	
ZDDH0123	360.00	361.00	1.00	3.55	
ZDDH0123	383.00	384.00	1.00	0.78	

Table 1 – Significant drill results for holes ZDDH0112, ZDDH0114, ZDDH0115, ZDDH0116, ZDDH0117, ZDDH0118, ZDDH0119, ZDDH0120, ZDDH0121, ZDDH0122, ZDDH0123, results are uncut, no top cut has been applied. A table of significant intercepts for previously reported holes is presented in Appendix 1.

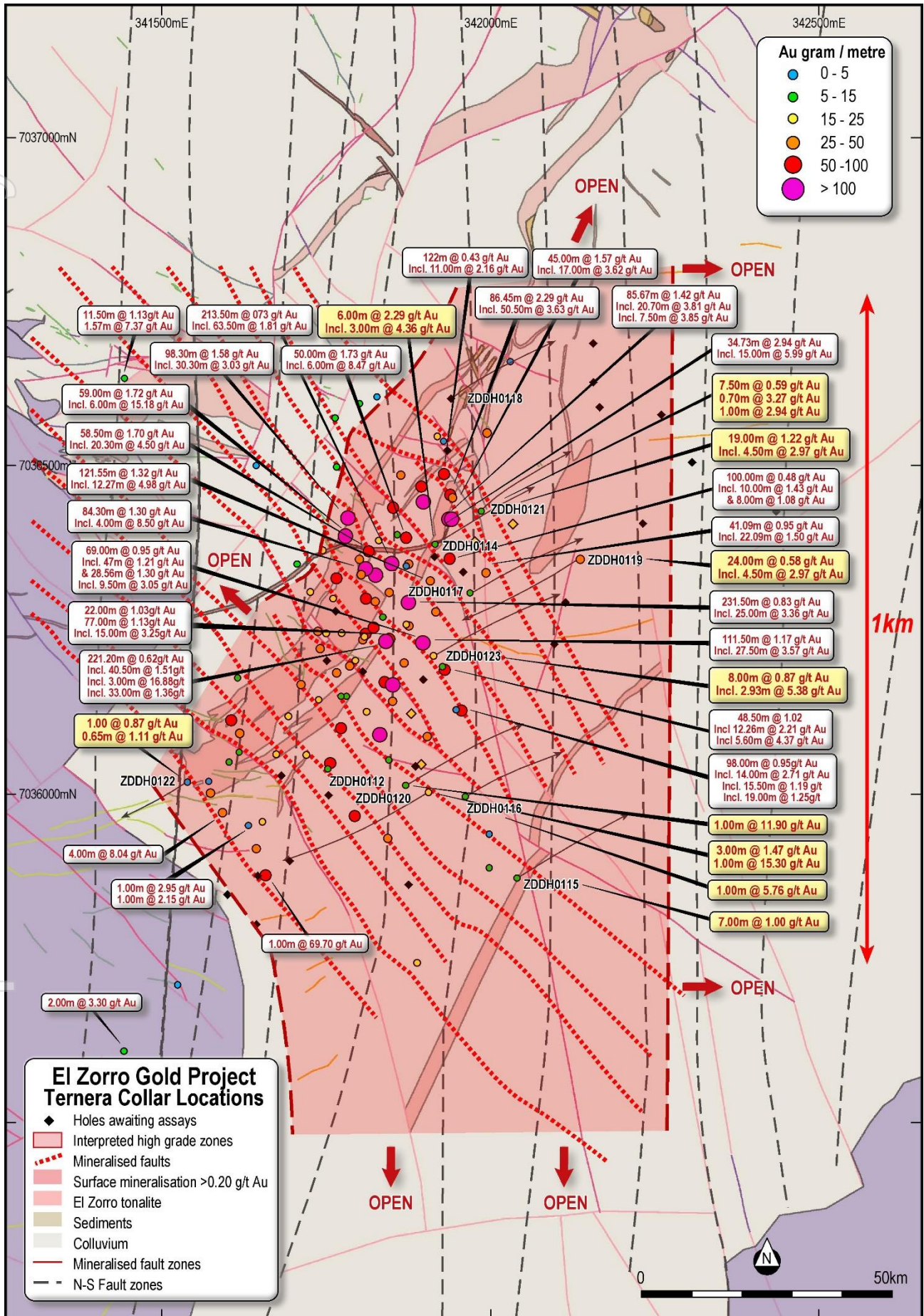


Figure 1 – Terner Drilling – collar locations on geology with selected significant intercepts. Results reported in this announcement are noted in gold highlight. PSAD56/19S datum.

Authorised by the Board of Tesoro Resources Limited.

For more information:

Company:

Zeff Reeves Managing Director
Tesoro Resources Limited
+61 8 9322 1587

Investors:

Peter Taylor
NWR Communications
+61 (0) 412 036 231
peter@nwrcommunications.com.au

About Tesoro

Tesoro Resources Limited was established with a strategy of acquiring, exploring, and developing mining projects in the Coastal Cordillera region of Chile. The Coastal Cordillera region is host to multiple world class copper and gold mines, has well established infrastructure, service providers and an experienced mining workforce. Large areas of the Coastal Cordillera remain unexplored due to the unconsolidated nature of mining concession ownership, but Tesoro, via its in-country network and experience has been able secure rights to a district scale gold project in-line with the Company's strategy. Tesoro's 95% owned Chilean subsidiary owns 85% of the El Zorro Gold Project.



Competent Persons Statement

The information in this report that relates to Exploration Results is based on information compiled by Mr Zeffron Reeves (B App Sc (Hons) Applied Geology) MBA, MAIG). Mr Reeves is a member of the Australian Institute of Geoscientists and a Director and major shareholder of the Company. Mr Reeves has sufficient experience that is relevant to the style of mineralisation and type of deposit under consideration and to the activity which he is undertaking to qualify as a Competent Person as defined in the 2012 Edition of the Australasian Code for Reporting of Exploration Results, Mineral Resources and Ore Reserves. Mr Reeves consents to the inclusion in this report of the matters based on this information in the form and context in which it appears.

Future Performance

This announcement may contain certain forward-looking statements and opinion. Forward-looking statements, including projections, forecasts and estimates, are provided as a general guide only and should not be relied on as an indication or guarantee of future performance and involve known and unknown risks, uncertainties, assumptions, contingencies and other important factors, many of which are outside the control of the Company and which are subject to change without notice and could cause the actual results, performance or achievements of the Company to be materially different from the future results, performance or achievements expressed or implied by such statements. Past performance is not necessarily a guide to future performance and no representation or warranty is made as to the likelihood of achievement or reasonableness of any forward-looking statements or other forecast. Nothing contained in this announcement nor any information made available to you is, or and shall be relied upon as, a promise, representation, warranty or guarantee as to the past, present or the future performance of Tesoro.

APPENDIX 1 – SIGNIFICANT INTERCEPT TABLE

Hole_ID	From (m)	To (m)	Interval	Au (g/t)	Comments
ZDDH0001	5.00	119.00	114.00	0.35	
ZDDH0001	5.00	15.00	10.00	0.55	including
ZDDH0001	5.00	51.30	46.30	0.45	including
ZDDH0001	12.00	13.00	1.00	1.64	including
ZDDH0001	14.30	15.00	0.70	2.35	including
ZDDH0001	33.64	39.00	5.36	0.97	including
ZDDH0001	44.30	51.30	7.00	0.67	including
ZDDH0001	64.00	65.00	1.00	2.50	including
ZDDH0001	75.50	79.00	3.50	0.89	including
ZDDH0001	75.50	76.00	0.50	4.82	including
ZDDH0001	107.00	112.00	5.00	1.11	including
ZDDH0001	117.00	119.00	2.00	2.05	including
ZDDH0002	5.70	68.00	62.30	0.54	
ZDDH0002	8.80	24.30	15.50	1.15	including
ZDDH0002	8.80	14.00	5.20	1.96	including
ZDDH0002	51.70	68.00	16.30	0.78	including
ZDDH0002	58.00	61.00	3.00	3.62	including
ZDDH0003	21.00	77.30	56.30	0.50	
ZDDH0003	21.00	27.00	6.00	1.96	including
ZDDH0003	21.00	22.83	1.83	5.24	including
ZDDH0003	37.20	43.00	5.80	1.27	including
ZDDH0003	47.30	48.00	0.70	2.00	including
ZDDH0003	64.00	77.30	13.30	0.41	including
ZDDH0003	90.00	91.00	1.00	1.53	
ZDDH0004	5.00	66.00	61.00	0.97	
ZDDH0004	56.00	66.00	10.00	4.53	including
ZDDH0004	57.00	61.00	4.00	9.60	including
ZDDH0005	4.00	42.65	38.65	0.65	
ZDDH0005	4.00	32.00	28.00	0.84	including
ZDDH0005	9.80	28.00	18.20	1.17	including
ZDDH0005	9.80	10.15	0.35	20.10	including
ZDDH0005	51.60	52.00	0.40	2.03	
ZDDH0005	65.00	67.00	2.00	1.03	
ZDDH0005	72.00	85.90	13.90	0.52	
ZDDH0005	72.00	75.00	3.00	1.90	including
ZDDH0005	72.00	73.00	1.00	4.32	including
ZDDH0005	100.60	102.00	1.40	2.07	
ZDDH0005	130.00	132.60	2.60	0.66	
ZDDH0005	135.80	136.80	1.00	12.20	
ZDDH0005	0.00	88.00	88.00	0.15	
ZDDH0006	2.40	3.00	0.60	0.75	including
ZDDH0006	22.60	25.95	3.35	2.14	including
ZDDH0006	24.00	25.00	1.00	6.10	including
ZDDH0006	46.70	50.30	3.60	0.32	including
ZDDH0006	61.10	64.02	2.92	0.42	including
ZDDH0006	108.30	116.00	7.70	0.30	including
ZDDH0006	133.50	135.60	2.10	1.30	including
ZDDH0006	148.00	151.80	3.80	0.59	including
ZDDH0006	180.10	244.00	63.90	0.23	including
ZDDH0006	180.10	181.10	1.00	0.55	including
ZDDH0006	184.00	186.00	2.00	1.06	including
ZDDH0006	207.00	212.00	5.00	0.77	including
ZDDH0006	226.00	227.00	1.00	0.55	including
ZDDH0006	236.00	244.00	8.00	0.66	including
ZDDH0007	1.00	4.00	3.00	4.75	
ZDDH0007	39.00	66.20	27.20	0.70	
ZDDH0007	39.00	58.00	19.00	0.80	including
ZDDH0007	104.85	110.00	5.15	0.34	
ZDDH0007	117.40	118.00	0.60	2.75	
ZDDH0008	35.00	41.10	6.10	0.28	
ZDDH0008	58.00	59.00	1.00	1.43	

Hole_ID	From (m)	To (m)	Interval	Au (g/t)	Comments
ZDDH0009	4.00	6.00	2.00	1.39	
ZDDH0009	12.55	38.00	25.45	0.51	
ZDDH0009	21.00	26.00	5.00	1.09	including
ZDDH0009	48.00	48.50	0.50	2.19	
ZDDH0009	78.00	83.00	5.00	0.59	
ZDDH0010	31.00	33.00	2.00	2.47	
ZDDH0010	60.00	61.00	1.00	1.16	
ZDDH0010	66.00	67.00	1.00	1.04	
ZDDH0010	75.00	159.30	84.30	1.30	
ZDDH0010	75.00	104.00	29.00	2.95	including
ZDDH0010	82.50	86.45	3.95	4.97	including
ZDDH0010	91.00	102.00	11.00	4.70	including
ZDDH0010	93.00	97.00	4.00	8.50	including
ZDDH0010	120.00	126.00	6.00	1.11	including
ZDDH0010	149.00	159.00	10.00	1.07	including
ZDDH0011	176.00	274.30	98.30	1.58	
ZDDH0011	181.70	212.00	30.30	3.03	including
ZDDH0011	196.40	212.00	15.60	3.87	including
ZDDH0011	203.00	203.70	0.70	21.70	including
ZDDH0011	203.00	212.00	9.00	5.07	including
ZDDH0011	217.00	222.00	5.00	4.13	including
ZDDH0011	246.60	256.40	9.80	2.28	including
ZDDH0012	0.00	58.80	58.80	1.70	
ZDDH0012	1.70	22.00	20.30	4.50	including
ZDDH0012	1.70	8.40	6.70	12.21	including
ZDDH0012	2.30	4.70	2.40	33.35	including
ZDDH0012	17.60	22.00	4.40	2.00	including
ZDDH0012	17.60	20.00	2.40	2.82	including
ZDDH0012	53.20	58.80	5.60	0.95	
ZDDH0012	53.20	56.00	2.80	1.42	including
ZDDH0012	151.80	152.20	0.40	2.29	
ZDDH0013	0.00	3.00	3.00	0.83	
ZDDH0013	9.00	14.30	5.30	0.41	
ZDDH0013	25.00	29.80	4.80	0.72	
ZDDH0013	28.55	29.80	1.25	2.14	including
ZDDH0013	46.30	70.00	23.70	0.85	
ZDDH0013	46.30	51.50	5.20	1.24	including
ZDDH0013	51.25	65.35	14.10	1.08	including
ZDDH0013	58.00	65.35	7.35	1.65	including
ZDDH0013	102.00	104.00	2.00	0.79	
ZDDH0013	136.00	137.30	1.30	4.97	
ZDDH0013	165.00	173.60	8.60	1.60	
ZDDH0013	170.40	173.00	2.60	2.80	including
ZDDH0014	15.30	70.60	55.30	1.01	
ZDDH0014	15.30	34.00	18.70	2.19	including
ZDDH0014	15.30	26.30	11.00	3.40	including
ZDDH0014	23.00	26.30	3.30	6.18	including
ZDDH0014	64.60	70.60	6.00	2.03	including
ZDDH0014	64.60	67.35	2.75	5.00	including
ZDDH0014	112.00	122.50	10.50	0.52	
ZDDH0014	115.00	117.00	2.00	1.75	including
ZDDH0014	177.20	179.00	1.80	2.37	
ZDDH0015	37.90	39.70	1.80	1.11	
ZDDH0015	91.90	132.70	40.80	0.37	
ZDDH0015	91.90	94.60	2.70	1.64	including
ZDDH0015	112.00	116.00	4.00	1.13	including
ZDDH0015	240.60	242.00	1.40	8.46	
ZDDH0015	265.90	269.00	3.10	0.64	
ZDDH0016	125.00	131.72	6.72	1.47	
ZDDH0016	152.00	204.60	52.60	0.62	
ZDDH0016	188.10	194.00	5.90	3.30	including
ZDDH0016	188.58	188.90	0.32	31.30	including
ZDDH0016	203.60	204.60	1.00	3.00	including
ZDDH0016	281.00	290.00	9.00	0.36	
ZDDH0016	287.50	290.00	2.50	0.77	including

Hole_ID	From (m)	To (m)	Interval	Au (g/t)	Comments
ZDDH0017	44.00	74.00	30.00	0.94	
ZDDH0017	44.00	60.10	16.10	1.05	including
ZDDH0017	44.00	47.00	3.00	4.27	including
ZDDH0017	70.00	74.00	4.00	4.26	including
ZDDH0017	103.46	105.60	2.14	1.76	
ZDDH0017	167.55	254.00	86.45	2.29	including
ZDDH0017	182.70	233.20	50.50	3.63	including
ZDDH0017	183.22	206.22	23.00	7.20	including
ZDDH0017	190.00	205.00	15.00	10.82	including
ZDDH0017	197.00	202.30	5.30	25.31	including
ZDDH0017	200.00	202.30	2.30	46.41	including
ZDDH0018	187.27	222.00	34.73	2.94	
ZDDH0018	187.27	211.00	23.73	4.09	including
ZDDH0018	197.00	199.70	2.70	22.21	including
ZDDH0018	189.00	204.00	15.00	5.99	including
ZDDH0019	21.00	89.52	68.52	0.47	
ZDDH0019	36.00	45.00	9.00	1.34	including
ZDDH0019	74.00	79.00	5.00	1.23	including
ZDDH0020	87.30	87.60	0.30	3.33	
ZDDH0021	100.92	116.50	15.58	0.95	
ZDDH0021	107.50	112.00	4.50	1.24	including
ZDDH0021	100.92	101.70	0.78	8.44	including
ZDDH0021	189.25	208.50	19.25	2.86	open downhole
ZDDH0021	189.25	201.30	12.05	4.25	including
ZDDH0021	189.25	195.40	6.15	7.37	including
ZDDH0021	193.90	195.40	1.50	20.82	including
ZDDH0022	30.00	31.00	1.00	3.16	
ZDDH0022	78.00	119.17	41.17	1.38	
ZDDH0022	94.40	95.45	1.05	2.98	including
ZDDH0022	105.00	119.17	14.17	3.25	including
ZDDH0022	105.00	110.32	5.32	6.54	including
ZDDH0023	146.70	151.00	4.30	7.25	
ZDDH0023	146.70	149.00	2.30	13.30	including
ZDDH0023	273.00	277.00	4.00	1.06	
ZDDH0023	276.00	277.00	1.00	3.32	including
ZDDH0024	6.00	9.00	3.00	1.63	
ZDDH0024	41.00	78.00	37.00	0.86	
ZDDH0024	41.00	45.50	4.50	2.12	including
ZDDH0024	44.10	45.50	1.40	5.93	including
ZDDH0024	54.50	57.00	2.50	1.87	including
ZDDH0024	56.50	69.50	13.00	1.12	including
ZDDH0024	66.00	69.50	3.50	2.53	including
ZDDH0024	155.00	169.00	14.00	3.06	
ZDDH0024	162.20	163.50	1.30	19.72	including
ZDDH0024	161.80	167.00	5.20	6.97	including
ZDDH0025	49.00	170.55	121.55	1.32	
ZDDH0025	73.10	84.00	10.90	4.57	including
ZDDH0025	75.00	82.00	7.00	6.14	including
ZDDH0025	104.00	118.00	14.00	1.63	including
ZDDH0025	110.00	113.60	3.60	4.97	including
ZDDH0025	148.00	160.27	12.27	4.98	including
ZDDH0025	148.00	170.55	22.55	2.98	including
ZDDH0025	155.20	159.90	4.70	10.69	including
ZDDH0026	92.00	110.00	18.00	1.36	
ZDDH0026	105.40	110.00	4.60	4.99	including
ZDDH0026	233.00	242.00	9.00	1.85	
ZDDH0026	240.00	242.00	2.00	7.31	including
ZDDH0027	176.00	206.50	30.50	0.40	
ZDDH0027	176.00	202.00	26.00	0.44	including
ZDDH0027	176.00	188.00	12.00	0.64	including
ZDDH0027	176.00	182.00	6.00	1.21	including

Hole_ID	From (m)	To (m)	Interval	Au (g/t)	Comments
ZDDH0028	14.00	14.75	0.75	3.23	
ZDDH0028	21.00	28.00	7.00	0.85	
ZDDH0028	25.00	25.90	0.90	5.03	including
ZDDH0028	42.00	49.00	7.00	0.61	
ZDDH0028	43.90	45.00	1.10	1.10	including
ZDDH0029	29.50	243.00	213.50	0.73	
ZDDH0029	29.50	93.00	63.50	1.81	including
ZDDH0029	29.50	31.20	1.70	1.20	including
ZDDH0029	43.00	48.00	5.00	2.76	including
ZDDH0029	56.64	61.84	5.20	3.36	including
ZDDH0029	72.00	80.00	8.00	1.24	including
ZDDH0029	91.00	93.00	2.00	33.00	including
ZDDH0029	121.00	130.70	9.70	0.53	
ZDDH0029	121.00	122.00	1.00	3.20	including
ZDDH0029	166.30	195.00	28.70	0.82	
ZDDH0029	180.00	195.00	15.00	1.33	including
ZDDH0030	5.20	6.40	1.20	0.74	
ZDDH0030	50.00	76.00	26.00	0.69	
ZDDH0030	66.00	76.00	10.00	1.54	including
ZDDH0030	66.00	71.10	5.10	2.64	including
ZDDH0030	66.00	67.00	1.00	6.89	including
ZDDH0030	70.00	71.10	1.10	5.73	including
ZDDH0030	101.00	102.50	1.50	1.13	
ZDDH0030	117.00	120.00	3.00	3.23	
ZDDH0030	117.00	119.13	2.13	4.15	including
ZDDH0030	165.00	167.00	2.00	4.05	
ZDDH0030	195.40	199.00	3.60	1.41	open downhole
ZDDH0030	202.95	203.90	0.95	5.12	open downhole
ZDDH0031	72.00	303.00	231.00	0.83	
ZDDH0031	72.00	126.00	54.00	1.69	
ZDDH0031	72.00	75.60	3.60	1.27	including
ZDDH0031	100.00	104.44	4.44	1.04	including
ZDDH0031	100.00	125.00	25.00	3.36	including
ZDDH0031	118.30	125.00	6.70	11.57	including
ZDDH0031	146.40	154.00	7.60	0.79	including
ZDDH0031	171.60	173.00	1.40	1.40	including
ZDDH0031	193.30	217.60	24.30	2.43	including
ZDDH0031	193.30	208.00	14.70	3.77	including
ZDDH0031	193.30	197.00	3.70	4.16	including
ZDDH0031	204.34	217.60	13.26	3.25	including
ZDDH0031	204.34	208.00	3.66	10.76	including
ZDDH0031	228.00	229.00	1.00	2.17	including
ZDDH0031	248.00	263.90	15.90	1.04	including
ZDDH0031	291.00	295.00	4.00	1.00	including
ZDDH0032	3.20	6.00	2.80	1.23	
ZDDH0032	17.30	18.30	1.00	7.09	
ZDDH0032	43.50	44.00	0.50	5.70	
ZDDH0032	75.00	76.00	1.00	5.02	
ZDDH0032	128.00	204.00	76.00	0.93	
ZDDH0032	128.00	140.00	12.00	1.39	including
ZDDH0032	132.63	135.00	2.37	4.30	including
ZDDH0032	157.00	162.00	5.00	2.41	including
ZDDH0032	171.00	174.80	3.80	1.92	including
ZDDH0032	178.30	197.00	18.70	1.57	including
ZDDH0032	178.30	179.40	1.10	5.15	including
ZDDH0032	191.00	197.00	6.00	2.58	including
ZDDH0033	40.00	68.00	28.00	1.22	
ZDDH0033	57.00	67.00	10.00	3.17	including
ZDDH0033	59.00	63.00	4.00	5.96	including
ZDDH0033	100.00	104.00	4.00	1.51	
ZDDH0033	134.70	137.00	2.30	1.27	
ZDDH0033	143.00	144.00	1.00	1.45	

Hole_ID	From (m)	To (m)	Interval	Au (g/t)	Comments
ZDDH0034	17.00	28.00	11.00	0.79	
ZDDH0034	23.00	24.00	1.00	4.59	including
ZDDH0034	27.00	28.00	1.00	1.77	including
ZDDH0034	62.22	63.34	1.12	2.85	
ZDDH0034	87.00	92.84	5.84	1.12	
ZDDH0034	89.00	91.00	2.00	2.45	
ZDDH0034	105.40	106.00	0.60	1.15	
ZDDH0034	116.00	117.00	1.00	1.17	
ZDDH0034	172.00	173.00	1.00	1.68	
ZDDH0034	180.40	181.50	1.10	6.58	
ZDDH0034	193.00	194.00	1.00	2.73	
ZDDH0034	202.00	203.00	1.00	2.12	
ZDDH0035	67.00	68.00	1.00	2.67	
ZDDH0035	81.10	110.34	29.24	1.05	
ZDDH0035	89.00	94.00	5.00	4.11	including
ZDDH0035	84.00	106.00	22.00	1.34	including
ZDDH0035	144.00	155.00	11.00	1.15	
ZDDH0035	153.00	155.00	2.00	4.41	including
ZDDH0035	162.00	164.00	2.00	1.03	
ZDDH0035	199.00	200.00	1.00	1.76	
ZDDH0035	192.00	238.00	46.00	0.72	
ZDDH0035	224.00	238.00	14.00	1.86	including
ZDDH0035	224.00	233.00	9.00	2.59	including
ZDDH0035	277.00	278.00	1.00	1.63	
ZDDH0036	74.00	125.00	51.00	1.07	
ZDDH0036	74.00	96.00	22.00	2.16	including
ZDDH0036	88.30	96.00	7.70	5.04	including
ZDDH0036	104.00	105.00	1.00	2.33	including
ZDDH0036	114.00	115.00	1.00	2.84	including
ZDDH0036	165.00	166.00	1.00	1.11	
ZDDH0036	215.00	216.00	1.00	1.60	
ZDDH0037	42.00	65.00	23.00	0.40	
ZDDH0037	42.00	42.68	0.68	1.55	including
ZDDH0037	56.00	65.00	9.00	0.70	including
ZDDH0037	56.00	57.00	1.00	2.47	including
ZDDH0037	62.00	64.00	2.00	1.32	including
ZDDH0037	149.00	172.00	23.00	0.82	
ZDDH0037	149.00	154.00	5.00	1.47	including
ZDDH0037	162.00	172.00	10.00	0.92	including
ZDDH0037	162.00	168.00	6.00	1.04	including
ZDDH0038	23.00	24.00	1.00	3.12	
ZDDH0038	74.20	113.00	38.80	0.49	
ZDDH0038	74.20	77.00	2.80	2.06	including
ZDDH0038	92.00	93.00	1.00	4.39	including
ZDDH0038	105.00	106.00	1.00	2.11	including
ZDDH0038	148.00	152.00	4.00	1.17	including
ZDDH0038	178.00	186.00	8.00	0.50	
ZDDH0038	185.00	186.00	1.00	2.48	including
ZDDH0038	200.00	208.10	8.10	1.12	including
ZDDH0038	202.00	204.00	2.00	3.72	including
ZDDH0039	2.50	5.60	3.10	0.39	
ZDDH0039	78.70	81.00	2.30	1.43	
ZDDH0039	188.00	252.50	64.50	0.47	
ZDDH0039	212.00	232.00	20.00	0.84	including
ZDDH0039	212.00	218.00	6.00	1.49	including
ZDDH0039	226.00	227.00	1.00	3.86	including
ZDDH0039	237.00	238.00	1.00	2.30	including
ZDDH0039	268.00	269.00	1.00	1.62	including
ZDDH0040	136.00	197.00	61.00	0.75	
ZDDH0040	136.00	152.00	16.00	1.96	including
ZDDH0040	136.00	146.00	10.00	2.61	including
ZDDH0040	142.00	146.00	4.00	5.34	including
ZDDH0040	160.00	164.00	4.00	0.95	including
ZDDH0040	161.00	162.00	1.00	2.84	including
ZDDH0040	182.00	188.00	6.00	0.72	including
ZDDH0040	195.00	197.00	2.00	2.75	including
ZDDH0040	288.00	291.00	3.00	1.24	including
ZDDH0041	2.00	12.00	10.00	0.55	
ZDDH0041	6.00	8.00	2.00	1.33	including
ZDDH0041	23.50	52.00	28.50	0.38	
ZDDH0041	23.50	32.00	8.50	0.48	including
ZDDH0041	29.00	32.00	3.00	0.99	including

Hole_ID	From (m)	To (m)	Interval	Au (g/t)	Comments
ZDDH0041	40.00	46.00	6.00	0.61	
ZDDH0041	106.20	108.00	1.80	3.49	
ZDDH0041	127.50	128.00	0.50	29.90	
ZDDH0041	140.00	145.00	5.00	5.91	
ZDDH0041	141.65	143.50	1.85	15.22	including
ZDDH0042	112.00	127.00	15.00	0.68	
ZDDH0042	126.00	127.00	1.00	5.64	including
ZDDH0043	5.30	56.00	50.70	0.45	
ZDDH0043	5.30	22.50	17.20	0.94	including
ZDDH0043	9.50	13.00	3.50	3.44	including
ZDDH0043	80.00	105.00	25.00	0.41	
ZDDH0043	81.00	85.00	4.00	0.87	including
ZDDH0043	103.00	105.00	2.00	1.60	including
ZDDH0043	241.00	242.00	1.00	1.02	
ZDDH0044	104.00	107.00	3.00	0.92	
ZDDH0044	104.00	105.00	1.00	2.25	including
ZDDH0045	23.00	50.00	27.00	0.59	
ZDDH0045	36.00	46.20	10.20	1.07	including
ZDDH0045	36.00	40.00	4.00	1.80	including
ZDDH0045	97.00	98.00	1.00	1.91	
ZDDH0045	196.30	203.00	6.70	1.10	
ZDDH0045	197.00	198.50	1.50	3.21	including
ZDDH0045	196.30	199.00	2.70	2.70	including
ZDDH0046	17.60	39.00	21.40	1.17	
ZDDH0046	26.00	31.00	5.00	3.75	including
ZDDH0046	28.00	31.00	3.00	5.71	including
ZDDH0046	180.00	181.00	1.00	1.11	
ZDDH0046	223.00	224.00	1.00	1.45	
ZDDH0046	248.60	250.00	1.40	1.35	
ZDDH0047	30.00	134.50	104.50	0.56	
ZDDH0047	35.00	36.00	1.00	2.98	including
ZDDH0047	74.00	75.00	1.00	2.03	including
ZDDH0047	97.00	134.80	37.80	1.23	including
ZDDH0047	97.00	109.00	12.00	2.68	including
ZDDH0047	97.00	99.00	2.00	11.00	including
ZDDH0047	130.00	134.80	4.80	2.71	including
ZDDH0047	210.00	211.00	1.00	1.78	
ZDDH0047	288.00	289.00	1.00	1.19	
ZDDH0048	45.00	90.00	45.00	0.54	
ZDDH0048	53.50	54.50	1.00	3.15	including
ZDDH0048	47.00	55.00	8.00	1.02	including
ZDDH0048	80.00	83.00	3.00	4.18	including
ZDDH0049	124.00	235.50	111.50	1.25	
ZDDH0049	124.00	182.00	58.00	2.04	including
ZDDH0049	154.00	181.50	27.50	3.57	including
ZDDH0049	124.00	141.00	17.00	1.11	including
ZDDH0049	124.00	125.00	1.00	10.25	including
ZDDH0049	159.00	172.00	13.00	5.32	including
ZDDH0049	159.00	165.00	6.00	4.17	including
ZDDH0049	177.00	182.00	5.00	5.14	including
ZDDH0049	213.00	235.50	22.50	0.89	including
ZDDH0049	215.00	218.00	3.00	1.39	including
ZDDH0049	227.00	235.50	8.50	1.81	including
ZDDH0049	231.00	235.50	4.50	3.07	including
ZDDH0049	245.00	246.00	1.00	1.66	
ZDDH0049	285.00	286.00	1.00	3.81	
ZDDH0049	290.00	291.00	1.00	1.12	
ZDDH0050	6.00	16.00	10.00	1.56	
ZDDH0050	7.00	8.00	1.00	10.65	including
ZDDH0050	92.00	93.00	1.00	2.55	
ZDDH0050	157.00	222.00	65.00	0.84	
ZDDH0050	183.00	185.00	2.00	2.02	including
ZDDH0050	192.00	193.00	1.00	2.35	including
ZDDH0050	202.00	209.00	7.00	5.84	including
ZDDH0050	205.00	207.50	2.50	15.92	including
ZDDH0050	220.00	221.00	1.00	1.27	including

Hole_ID	From (m)	To (m)	Interval	Au (g/t)	Comments
ZDDH0051	249.00	347.00	98.00	0.95	
ZDDH0051	251.00	282.00	31.00	1.55	including
ZDDH0051	251.00	265.00	14.00	2.71	including
ZDDH0051	258.00	264.00	6.00	4.86	including
ZDDH0051	260.00	261.00	1.00	27.60	including
ZDDH0051	264.00	265.00	1.00	9.85	including
ZDDH0051	303.00	320.00	17.00	1.03	including
ZDDH0051	317.00	318.00	1.00	5.99	including
ZDDH0051	317.00	332.50	15.50	1.19	including
ZDDH0051	328.00	347.00	19.00	1.25	including
ZDDH0051	345.00	346.00	1.00	8.25	including
ZDDH0052	10.00	11.00	1.00	1.35	
ZDDH0052	25.00	67.00	42.00	0.44	
ZDDH0052	25.50	26.50	1.00	2.25	including
ZDDH0052	64.00	68.00	4.00	2.37	
ZDDH0052	154.00	157.00	3.00	3.27	
ZDDH0052	177.00	178.00	1.00	1.51	
ZDDH0053	7.70	87.00	79.30	0.72	
ZDDH0053	15.00	16.00	1.00	1.20	including
ZDDH0053	36.00	37.00	1.00	1.12	including
ZDDH0053	64.00	87.00	23.00	2.04	including
ZDDH0053	64.00	71.00	7.00	4.47	including
ZDDH0053	66.00	69.00	3.00	7.89	including
ZDDH0053	64.00	80.50	16.50	2.50	including
ZDDH0053	134.50	136.86	2.36	1.13	
ZDDH0053	146.00	147.00	1.00	1.87	
ZDDH0053	188.00	191.00	3.00	0.58	
ZDDH0053	240.00	241.00	1.00	1.09	
ZDDH0053	274.00	281.00	7.00	0.77	
ZDDH0053	274.00	275.00	1.00	3.65	including
ZDDH0053	280.00	281.00	1.00	1.11	including
ZDDH0054	91.00	110.00	19.00	0.46	
ZDDH0054	104.00	108.00	4.00	1.48	including
ZDDH0054	118.50	119.20	0.70	1.72	
ZDDH0054	252.00	253.00	1.00	1.23	
ZDDH0054	280.00	281.00	1.00	8.75	
ZDDH0054	336.00	337.00	1.00	1.23	
ZDDH0055	20.00	241.20	221.20	0.62	
ZDDH0055	21.00	22.00	1.00	3.19	including
ZDDH0055	48.00	122.00	74.00	1.05	including
ZDDH0055	48.00	88.50	40.50	1.51	including
ZDDH0055	48.00	60.12	12.12	4.83	including
ZDDH0055	77.00	80.00	3.00	16.88	including
ZDDH0055	105.00	109.00	4.00	3.04	including
ZDDH0055	168.00	169.00	1.00	2.00	including
ZDDH0055	200.00	241.20	41.20	1.13	including
ZDDH0055	200.00	233.00	33.00	1.36	including
ZDDH0055	200.00	201.00	1.00	2.83	including
ZDDH0055	207.00	208.00	1.00	6.51	including
ZDDH0055	217.00	231.00	14.00	2.03	including
ZDDH0055	223.00	231.00	8.00	2.64	including
ZDDH0055	282.00	326.00	44.00	0.48	
ZDDH0055	282.00	283.00	1.00	3.91	including
ZDDH0055	302.00	308.00	6.00	1.97	including
ZDDH0055	319.00	320.00	1.00	1.51	including
ZDDH0055	325.00	326.00	1.00	3.77	including
ZDDH0056	232.00	236.70	4.70	0.70	
ZDDH0056	236.00	236.70	0.70	3.09	
ZDDH0057	22.00	44.00	22.00	1.03	
ZDDH0057	22.00	23.00	1.00	10.20	including
ZDDH0057	22.00	30.00	8.00	1.61	including
ZDDH0057	216.00	233.00	17.00	0.55	
ZDDH0057	225.00	228.00	3.00	1.93	including
ZDDH0057	274.00	351.00	77.00	1.13	
ZDDH0057	279.00	321.00	42.00	1.97	including
ZDDH0057	279.00	311.00	32.00	2.32	including
ZDDH0057	283.00	298.00	15.00	3.25	including
ZDDH0057	318.00	321.00	3.00	2.75	including

Hole_ID	From (m)	To (m)	Interval	Au (g/t)	Comments
ZDDH0058	34.00	35.00	1.00	1.29	
ZDDH0058	237.00	250.00	13.00	0.47	
ZDDH0058	237.00	241.00	4.00	0.69	including
ZDDH0058	248.00	250.00	2.00	1.49	including
ZDDH0059	61.00	62.00	1.00	1.02	
ZDDH0059	194.50	282.00	87.50	0.72	
ZDDH0059	196.00	244.50	48.50	1.02	including
ZDDH0059	207.00	241.60	34.60	1.29	including
ZDDH0059	229.00	241.60	12.60	2.21	including
ZDDH0059	196.00	198.00	2.00	1.76	including
ZDDH0059	207.00	212.00	5.00	1.58	including
ZDDH0059	236.00	241.60	5.60	4.37	including
ZDDH0059	276.00	282.00	6.00	1.48	
ZDDH0060	156.00	168.00	12.00	0.44	
ZDDH0060	163.00	166.00	3.00	0.78	including
ZDDH0060	215.00	220.95	5.95	0.37	
ZDDH0061	157.00	158.00	1.00	2.31	
ZDDH0061	194.00	195.00	1.00	0.83	
ZDDH0062	8.00	70.00	62.00	0.46	
ZDDH0062	8.00	31.00	23.00	0.88	including
ZDDH0062	8.00	21.50	13.50	1.12	including
ZDDH0062	13.00	15.50	2.50	2.01	including
ZDDH0062	18.00	21.50	3.50	1.94	including
ZDDH0062	68.00	70.00	2.00	2.40	including
ZDDH0062	110.00	111.00	1.00	1.18	
ZDDH0062	119.00	120.00	1.00	2.36	
ZDDH0062	108.00	201.00	93.00	0.37	
ZDDH0062	129.00	173.00	44.00	0.53	including
ZDDH0062	134.00	141.00	7.00	0.76	including
ZDDH0062	162.20	172.00	9.80	1.30	including
ZDDH0062	225.00	226.00	1.00	1.40	
ZDDH0062	256.00	280.00	24.00	0.66	
ZDDH0062	256.00	261.00	5.00	2.29	including
ZDDH0063	0.00	3.00	3.00	2.26	
ZDDH0063	166.00	332.00	166.00	0.57	
ZDDH0063	169.00	171.00	2.00	1.20	including
ZDDH0063	180.00	210.00	30.00	0.90	including
ZDDH0063	180.00	182.00	2.00	7.52	including
ZDDH0063	197.00	210.00	13.00	0.75	including
ZDDH0063	277.00	316.00	39.00	1.22	including
ZDDH0063	300.00	316.00	16.00	2.96	including
ZDDH0063	311.00	316.00	5.00	9.09	including
ZDDH0064	102.00	103.70	1.70	1.43	
ZDDH0064	188.00	202.00	14.00	0.55	
ZDDH0064	192.00	196.00	4.00	1.33	including
ZDDH0064	243.00	244.00	1.00	1.11	
ZDDH0064	309.00	317.00	8.00	0.78	
ZDDH0064	311.00	314.00	3.00	1.53	
ZDDH0065	25.00	27.00	2.00	1.25	
ZDDH0065	56.40	58.80	2.40	0.78	
ZDDH0065	155.00	167.00	12.00	1.72	
ZDDH0066	306.00	465.00	159.00	0.46	including
ZDDH0066	306.00	443.00	137.00	0.51	including
ZDDH0066	389.00	436.00	47.00	1.00	including
ZDDH0066	308.00	310.00	2.00	1.98	including
ZDDH0066	357.00	362.00	5.00	1.10	including
ZDDH0066	357.50	361.00	3.50	1.43	including
ZDDH0066	389.00	412.00	23.00	1.09	including
ZDDH0066	389.00	401.00	12.00	1.59	including
ZDDH0066	389.00	392.00	3.00	2.97	including
ZDDH0066	424.00	443.00	19.00	1.24	including
ZDDH0066	427.00	436.00	9.00	2.14	including
ZDDH0067	5.00	64.00	59.00	1.72	

Hole_ID	From (m)	To (m)	Interval	Au (g/t)	Comments
ZDDH0067	5.00	37.40	32.40	3.05	including
ZDDH0067	31.00	37.00	6.00	15.18	including
ZDDH0067	81.00	82.00	1.00	1.87	
ZDDH0067	91.00	96.00	5.00	0.53	
ZDDH0067	107.00	121.00	14.00	0.47	
ZDDH0067	108.00	109.00	1.00	1.27	including
ZDDH0067	119.00	121.00	2.00	1.17	including
ZDDH0067	136.00	139.00	3.00	2.13	
ZDDH0068	0.00	7.00	7.00	0.45	
ZDDH0068	56.00	117.70	61.70	0.30	
ZDDH0068	60.00	83.00	23.00	0.46	including
ZDDH0068	60.00	61.00	1.00	2.43	including
ZDDH0068	74.00	75.00	1.00	1.14	including
ZDDH0068	114.90	117.70	2.80	0.84	including
ZDDH0068	143.00	154.00	11.00	0.62	
ZDDH0068	152.00	153.00	1.00	1.59	including
ZDDH0068	185.00	186.00	1.00	1.84	
ZDDH0068	189.00	190.00	1.00	1.37	
ZDDH0068	200.00	201.00	1.00	2.03	
ZDDH0068	209.00	210.00	1.00	4.42	
ZDDH0068	225.00	226.00	1.00	1.53	
ZDDH0068	303.00	303.93	0.93	1.14	
ZDDH0069	147.00	414.00	267.00	1.12	
ZDDH0069	221.00	414.00	193.00	1.47	including
ZDDH0069	224.00	404.00	180.00	1.57	including
ZDDH0069	234.00	366.00	132.00	1.89	including
ZDDH0069	147.00	162.00	15.00	0.68	including
ZDDH0069	147.00	152.00	5.00	1.24	including
ZDDH0069	184.00	184.50	0.50	8.69	including
ZDDH0069	234.00	258.00	24.00	1.72	including
ZDDH0069	244.00	248.00	4.00	4.94	including
ZDDH0069	289.00	345.00	56.00	3.49	including
ZDDH0069	292.00	337.00	45.00	4.02	including
ZDDH0069	289.00	322.00	33.00	5.07	including
ZDDH0069	292.00	320.50	28.50	5.68	including
ZDDH0069	314.00	320.50	6.50	7.28	including
ZDDH0069	292.00	303.00	11.00	7.73	including
ZDDH0069	392.50	401.00	8.50	2.49	including
ZDDH0069	398.00	400.00	2.00	7.89	including
ZDDH0070	1.50	24.00	22.50	0.34	
ZDDH0070	10.95	24.00	13.05	0.50	including
ZDDH0070	18.00	21.50	3.50	0.98	including
ZDDH0070	155.00	156.00	1.00	2.28	
ZDDH0071	25.00	96.00	71.00	0.80	
ZDDH0071	41.00	43.00	2.00	1.96	including
ZDDH0071	62.79	70.00	7.21	1.04	including
ZDDH0071	67.00	70.00	3.00	1.98	including
ZDDH0071	88.00	96.00	8.00	4.18	including
ZDDH0071	89.75	95.00	5.25	5.97	including
ZDDH0071	133.00	149.50	16.50	0.36	
ZDDH0071	139.00	146.50	7.50	0.55	including
ZDDH0071	255.00	255.50	0.50	2.69	
ZDDH0072	356.00	396.00	40.00	0.69	
ZDDH0072	366.20	372.20	6.00	1.89	including
ZDDH0072	366.20	368.00	1.80	5.50	including
ZDDH0072	383.00	384.00	1.00	5.01	including
ZDDH0072	393.00	394.00	1.00	8.39	including
ZDDH0073	21.40	23.00	1.60	0.62	
ZDDH0073	69.00	70.00	1.00	3.33	
ZDDH0073	93.00	95.00	2.00	2.04	
ZDDH0073	179.00	180.00	1.00	2.73	
ZDDH0073	207.00	285.00	78.00	0.41	
ZDDH0073	207.00	209.00	2.00	7.42	including
ZDDH0073	207.00	232.06	25.06	0.74	including
ZDDH0073	279.00	279.50	0.50	13.80	including
ZDDH0074	89.00	116.00	27.00	1.16	
ZDDH0074	89.00	94.00	5.00	2.15	including
ZDDH0074	114.00	116.00	2.00	8.06	including

Hole_ID	From (m)	To (m)	Interval	Au (g/t)	Comments
ZDDH0075	76.00	335.90	259.90	0.70	
ZDDH0075	89.00	309.00	220.00	0.86	including
ZDDH0075	97.00	100.00	3.00	2.63	including
ZDDH0075	124.00	127.00	3.00	2.40	including
ZDDH0075	137.00	140.00	3.00	1.49	including
ZDDH0075	153.50	155.00	1.50	5.99	including
ZDDH0075	178.00	187.00	9.00	1.02	including
ZDDH0075	217.00	220.00	3.00	1.18	including
ZDDH0075	236.00	238.00	2.00	1.56	including
ZDDH0075	249.00	251.00	2.00	1.03	including
ZDDH0075	270.00	309.00	39.00	2.73	including
ZDDH0075	270.00	296.00	26.00	3.54	including
ZDDH0075	270.00	285.50	15.50	5.49	including
ZDDH0075	304.00	309.00	5.00	2.72	including
ZDDH0075	328.00	338.80	10.80	1.44	including
ZDDH0075	336.00	338.80	2.80	4.97	including
ZDDH0076	145.00	146.00	1.00	0.57	
ZDDH0077	65.00	82.00	17.00	0.54	
ZDDH0077	74.00	78.00	4.00	1.13	including
ZDDH0077	69.60	70.60	1.00	1.91	including
ZDDH0077	121.70	122.50	0.80	1.56	
ZDDH0078	214.00	225.00	11.00	0.67	
ZDDH0078	214.33	216.00	1.67	3.46	including
ZDDH0078	263.00	265.00	2.00	1.54	
ZDDH0078	391.00	393.00	2.00	0.92	
ZDDH0079	33.00	34.00	1.00	1.33	
ZDDH0079	70.20	72.10	1.90	1.56	
ZDDH0079	165.60	166.00	0.40	4.26	
ZDDH0079	256.00	257.00	1.00	2.14	
ZDDH0079	272.00	273.00	1.00	1.26	
ZDDH0079	288.00	295.00	7.00	0.91	
ZDDH0079	290.00	294.00	4.00	1.19	including
ZDDH0080	108.00	121.00	13.00	1.17	
ZDDH0080	115.50	120.00	4.50	3.08	including
ZDDH0080	141.00	143.00	2.00	0.98	
ZDDH0080	254.50	255.00	0.50	1.19	
ZDDH0080	285.05	293.00	7.95	0.46	
ZDDH0080	286.00	287.50	1.50	1.01	including
ZDDH0081	82.00	110.00	28.00	1.90	
ZDDH0081	82.00	91.00	9.00	3.76	including
ZDDH0081	82.00	84.00	2.00	10.95	including
ZDDH0081	88.50	91.00	2.50	4.63	including
ZDDH0081	104.00	110.00	6.00	2.91	including
ZDDH0081	104.00	106.00	2.00	7.45	including
ZDDH0081	201.00	202.00	1.00	1.62	
ZDDH0082	151.00	153.00	2.00	3.30	
ZDDH0082	273.00	303.00	30.00	0.33	
ZDDH0082	294.00	295.00	1.00	2.88	
ZDDH0082	301.00	303.00	2.00	2.43	
ZDDH0083	180.00	190.10	10.10	0.92	
ZDDH0083	180.00	184.00	4.00	1.85	including
ZDDH0083	264.00	288.00	24.00	1.63	
ZDDH0083	273.00	288.00	15.00	2.55	including
ZDDH0083	273.00	280.00	7.00	4.48	including
ZDDH0083	276.00	280.00	4.00	7.25	including
ZDDH0083	336.00	339.00	3.00	1.21	
ZDDH0083	362.00	363.00	1.00	3.57	
ZDDH0083	395.00	409.00	14.00	1.11	
ZDDH0083	401.00	407.00	6.00	2.12	including
ZDDH0084	118.30	203.97	85.67	1.42	
ZDDH0084	124.00	144.70	20.70	3.81	including
ZDDH0084	125.00	136.00	11.00	5.49	including
ZDDH0084	162.00	169.50	7.50	3.85	including

Hole_ID	From (m)	To (m)	Interval	Au (g/t)	Comments
ZDDH0085	22.00	24.00	2.00	1.94	
ZDDH0085	85.00	153.00	68.00	0.47	
ZDDH0085	85.00	87.00	2.00	2.34	including
ZDDH0085	141.65	153.00	11.35	2.19	
ZDDH0085	147.00	151.00	4.00	5.38	
ZDDH0085	185.00	186.00	1.00	1.62	
ZDDH0085	219.00	318.00	99.00	0.49	
ZDDH0085	219.00	224.00	5.00	2.40	including
ZDDH0085	250.00	256.00	6.00	2.25	including
ZDDH0085	265.60	269.00	3.40	1.42	including
ZDDH0085	290.00	292.00	2.00	1.69	including
ZDDH0085	307.00	309.00	2.00	1.46	including
ZDDH0085	312.00	313.00	1.00	1.48	including
ZDDH0086	15.00	16.00	1.00	0.58	
ZDDH0086	36.00	38.00	2.00	0.30	
ZDDH0086	128.00	129.00	1.00	0.90	
ZDDH0086	135.00	137.00	2.00	0.51	
ZDDH0087	86.00	190.00	104.00	0.76	
ZDDH0087	86.00	131.00	45.00	1.57	including
ZDDH0087	86.00	116.00	30.00	2.24	including
ZDDH0087	90.00	107.00	17.00	3.62	including
ZDDH0087	187.00	189.00	2.00	1.12	
ZDDH0088	9.00	10.00	1.00	0.48	
ZDDH0088	22.50	23.50	1.00	0.49	
ZDDH0088	39.80	40.50	0.70	0.97	
ZDDH0088	90.00	92.00	2.00	0.57	
ZDDH0088	133.50	134.00	0.50	0.91	
ZDDH0088	180.00	181.00	1.00	69.70	
ZDDH0089	28.45	37.00	8.55	0.37	
ZDDH0089	29.00	33.00	4.00	0.49	
ZDDH0090	23.00	24.00	1.00	0.89	
ZDDH0090	43.00	83.00	40.00	0.53	
ZDDH0090	60.00	78.00	18.00	1.05	including
ZDDH0090	60.00	69.00	9.00	1.35	including
ZDDH0090	148.00	182.00	34.00	0.44	
ZDDH0090	148.00	149.00	1.00	1.86	including
ZDDH0090	157.00	159.00	2.00	5.42	including
ZDDH0090	223.00	224.00	1.00	3.99	
ZDDH0091	36.00	40.00	4.00	8.04	
ZDDH0091	36.00	38.00	2.00	14.44	including
ZDDH0091	73.00	85.50	12.50	0.33	
ZDDH0091	83.00	84.50	1.50	1.42	including
ZDDH0091	125.00	131.00	6.00	0.34	
ZDDH0091	172.00	173.00	1.00	0.47	
ZDDH0092	45.00	46.00	1.00	2.24	
ZDDH0092	86.00	87.00	1.00	10.88	
ZDDH0092	121.00	123.94	2.94	1.11	
ZDDH0092	282.00	382.00	100.00	0.48	
ZDDH0092	282.00	292.00	10.00	1.43	including
ZDDH0092	305.00	326.00	21.00	0.58	including
ZDDH0092	311.00	319.00	8.00	1.08	including
ZDDH0092	331.00	332.00	1.00	1.12	including
ZDDH0092	369.00	371.00	2.00	2.31	including
ZDDH0092	378.00	379.00	1.00	1.25	including
ZDDH0093	25.60	27.05	1.45	15.94	
ZDDH0093	116.00	117.00	1.00	1.85	
ZDDH0093	132.00	150.00	18.00	0.51	
ZDDH0093	136.00	142.00	6.00	1.16	including
ZDDH0093	165.00	175.00	10.00	0.74	
ZDDH0093	170.00	173.00	3.00	1.86	including
ZDDH0093	190.47	194.18	3.71	0.79	
ZDDH0093	268.00	270.00	2.00	1.10	
ZDDH0093	279.00	304.00	25.00	0.77	
ZDDH0093	279.00	281.00	2.00	1.40	including
ZDDH0093	290.00	304.00	14.00	1.08	including
ZDDH0093	298.00	304.00	6.00	2.24	including

Hole_ID	From (m)	To (m)	Interval	Au (g/t)	Comments
ZDDH0094	37.00	40.00	3.00	2.41	
ZDDH0094	83.49	105.00	21.51	0.71	
ZDDH0094	86.30	91.00	4.70	1.02	
ZDDH0094	100.00	105.00	5.00	1.64	
ZDDH0094	298.00	346.00	48.00	0.67	
ZDDH0094	298.00	299.00	1.00	1.54	including
ZDDH0094	319.00	323.00	4.00	6.45	including
ZDDH0094	343.00	344.00	1.00	1.03	including
ZDDH0094	375.00	375.50	0.50	1.51	
ZDDH0095	106.00	108.00	2.00	0.62	
ZDDH0095	135.95	136.50	0.55	1.52	
ZDDH0095	212.50	224.00	11.50	1.13	
ZDDH0095	212.50	214.07	1.57	7.37	including
ZDDH0096	29.00	47.00	18.00	0.46	
ZDDH0096	39.00	46.00	7.00	0.79	including
ZDDH0096	112.00	113.50	1.50	0.98	
ZDDH0096	155.00	157.50	2.50	0.83	
ZDDH0096	185.00	187.00	2.00	1.59	
ZDDH0096	190.00	191.00	1.00	1.41	
ZDDH0096	261.00	267.00	6.00	0.64	
ZDDH0096	261.00	262.00	1.00	2.21	including
ZDDH0097	9.00	10.00	1.00	2.95	
ZDDH0097	89.00	90.00	1.00	2.15	
ZDDH0098	1.20	3.00	1.80	1.25	
ZDDH0098	74.00	124.00	50.00	1.73	
ZDDH0098	74.00	76.00	2.00	13.95	including
ZDDH0098	97.00	103.00	6.00	8.47	including
ZDDH0098	166.00	203.00	37.00	0.62	
ZDDH0098	168.15	172.82	4.67	1.88	including
ZDDH0098	190.00	203.00	13.00	0.98	including
ZDDH0098	199.00	203.00	4.00	2.40	including
ZDDH0099	10.00	11.00	1.00	3.57	
ZDDH0099	90.80	157.00	66.20	0.53	
ZDDH0099	96.00	111.00	15.00	1.36	
ZDDH0099	138.00	139.00	1.00	1.13	
ZDDH0099	148.00	148.80	0.80	3.43	
ZDDH0099	178.00	178.90	0.90	6.53	
ZDDH0099	251.00	252.00	1.00	1.11	
ZDDH0099	319.40	328.00	8.60	0.58	
ZDDH0099	319.40	322.00	2.60	1.32	
ZDDH0099	342.00	343.00	1.00	1.13	
ZDDH0100	8.00	9.00	1.00	1.08	
ZDDH0100	21.00	56.00	35.00	1.07	
ZDDH0100	29.10	54.50	25.40	1.39	including
ZDDH0100	29.10	31.00	1.90	10.30	including
ZDDH0100	105.00	106.00	1.00	5.86	
ZDDH0100	144.50	157.00	12.50	0.75	
ZDDH0100	147.00	148.00	1.00	4.99	including
ZDDH0100	155.00	157.00	2.00	1.51	including
ZDDH0100	193.00	194.00	1.00	1.45	
ZDDH0101	80.00	81.87	1.87	0.82	
ZDDH0101	133.00	202.00	69.00	0.95	
ZDDH0101	133.00	180.00	47.00	1.21	including
ZDDH0101	136.00	159.40	23.40	1.76	including
ZDDH0101	196.00	197.00	1.00	4.14	including
ZDDH0101	258.00	286.56	28.56	1.30	
ZDDH0101	275.50	285.00	9.50	3.05	including
ZDDH0101	280.00	284.00	4.00	5.94	including
ZDDH0102	187.50	202.00	14.50	0.28	
ZDDH0102	189.00	190.00	1.00	1.46	including
ZDDH0103	4.50	9.00	4.50	0.35	
ZDDH0103	31.20	31.60	0.40	3.48	
ZDDH0103	88.00	102.00	14.00	1.42	
ZDDH0103	88.00	93.60	5.60	3.01	including

Hole_ID	From (m)	To (m)	Interval	Au (g/t)	Comments
ZDDH0103	133.00	133.76	0.76	1.50	
ZDDH0103	140.00	141.00	1.00	4.26	
ZDDH0103	168.00	180.00	12.00	0.40	
ZDDH0103	178.70	180.00	1.30	1.76	including
ZDDH0103	226.00	228.00	2.00	0.56	
ZDDH0104	174.91	216.00	41.09	0.95	
ZDDH0104	174.91	197.00	22.09	1.50	including
ZDDH0104	183.00	197.00	14.00	1.87	including
ZDDH0107	14.10	16.28	2.18	1.15	
ZDDH0107	35.70	48.00	12.30	0.70	
ZDDH0107	37.00	39.00	2.00	2.31	including
ZDDH0107	46.00	48.00	2.00	1.08	
ZDDH0107	359.00	382.00	23.00	0.57	
ZDDH0107	372.00	381.00	9.00	1.16	including
ZDDH0107	353.00	354.00	1.00	1.28	
ZDDH0110	80.00	100.00	20.00	1.48	
ZDDH0110	80.00	92.00	12.00	1.99	including
ZDDH0110	82.50	88.00	5.50	3.37	including
ZDDH0110	114.00	120.00	6.00	0.53	
ZDDH0110	117.00	118.00	1.00	1.39	including
ZDDH0110	186.00	187.00	1.00	1.10	
ZDDH0110	194.00	195.00	1.00	1.33	
ZDDH0111	8.00	130.00	122.00	0.43	
ZDDH0111	8.00	10.00	2.00	0.71	including
ZDDH0111	19.00	27.00	8.00	0.65	including
ZDDH0111	21.00	22.00	1.00	2.30	including
ZDDH0111	27.00	28.00	1.00	1.57	including
ZDDH0111	43.00	54.00	11.00	0.34	including
ZDDH0111	85.00	86.00	1.00	3.01	including
ZDDH0111	98.00	109.00	11.00	2.16	including
ZDDH0111	120.00	125.00	5.00	1.35	including
ZDDH0112	130.00	132.00	2.00	0.47	
ZDDH0112	154.00	155.00	1.00	11.90	
ZDDH0112	240.00	241.00	1.00	1.08	
ZDDH0114	26.50	27.20	0.70	0.40	
ZDDH0114	47.20	53.00	5.80	0.47	
ZDDH0114	49.00	51.00	2.00	0.85	
ZDDH0114	69.00	71.00	2.00	0.44	
ZDDH0114	97.00	106.90	9.90	0.57	
ZDDH0114	103.00	105.00	2.00	1.74	including
ZDDH0114	164.00	165.00	1.00	1.00	
ZDDH0114	223.00	229.00	6.00	2.29	
ZDDH0114	224.00	227.00	3.00	4.36	including
ZDDH0115	235.00	236.00	1.00	0.43	
ZDDH0115	311.00	318.00	7.00	1.00	
ZDDH0115	312.00	313.00	1.00	3.33	
ZDDH0116	59.00	60.00	1.00	5.76	
ZDDH0116	65.88	67.27	1.39	0.49	
ZDDH0117	162.00	163.00	1.00	1.20	
ZDDH0117	190.80	201.00	10.20	0.65	
ZDDH0117	190.80	191.50	0.70	5.03	including
ZDDH0117	198.00	201.00	3.00	1.00	including
ZDDH0117	225.00	227.00	2.00	0.46	
ZDDH0117	261.00	285.00	24.00	0.58	
ZDDH0117	268.00	281.00	13.00	0.88	including
ZDDH0117	268.00	270.00	2.00	1.50	including
ZDDH0117	280.00	281.00	1.00	4.12	including
ZDDH0118					No Significant Intercept
ZDDH0119	4.60	6.60	2.00	0.52	
ZDDH0119	20.00	26.00	6.00	0.50	
ZDDH0119	20.00	21.00	1.00	1.69	
ZDDH0119	261.00	262.00	1.00	1.18	
ZDDH0119	269.00	270.00	1.00	1.48	
ZDDH0119	326.00	374.00	48.00	0.53	

Hole_ID	From (m)	To (m)	Interval	Au (g/t)	Comments
ZDDH0119	350.00	374.00	24.00	1.02	including
ZDDH0119	355.00	374.00	19.00	1.22	including
ZDDH0119	355.00	359.50	4.50	2.97	including
ZDDH0119	365.00	366.00	1.00	2.64	including
ZDDH0119	373.00	374.00	1.00	4.22	including
ZDDH0120	229.00	232.00	3.00	1.47	
ZDDH0120	317.00	318.00	1.00	15.30	
ZDDH0120	351.00	352.00	1.00	1.16	
ZDDH0120	371.00	378.00	7.00	0.61	
ZDDH0120	376.00	377.00	1.00	1.39	including
ZDDH0120	383.00	384.00	1.00	1.03	
ZDDH0120	387.00	388.00	1.00	1.27	
ZDDH0120	396.00	397.00	1.00	1.02	
ZDDH0120	412.00	415.00	3.00	0.41	
ZDDH0121	35.00	41.00	6.00	0.47	
ZDDH0121	35.00	36.00	1.00	1.07	including
ZDDH0121	60.00	91.50	31.50	0.34	
ZDDH0121	66.00	73.50	7.50	0.59	including
ZDDH0121	66.00	67.00	1.00	1.11	including
ZDDH0121	72.50	73.20	0.70	3.27	including
ZDDH0121	79.00	80.00	1.00	1.40	including
ZDDH0121	86.50	88.00	1.50	2.31	including
ZDDH0121	230.00	231.00	1.00	2.94	including
ZDDH0122	3.00	7.10	4.10	0.38	
ZDDH0122	36.50	37.39	0.89	0.87	
ZDDH0122	43.00	44.00	1.00	0.87	
ZDDH0122	85.00	85.65	0.65	1.11	
ZDDH0122	155.00	156.00	1.00	0.84	
ZDDH0123	70.00	98.00	28.00	0.87	
ZDDH0123	76.00	77.00	1.00	1.93	including
ZDDH0123	84.07	87.00	2.93	5.38	including
ZDDH0123	200.00	204.00	4.00	0.85	
ZDDH0123	203.00	204.00	1.00	1.48	including
ZDDH0123	215.00	221.00	6.00	1.51	
ZDDH0123	242.60	243.20	0.60	1.16	
ZDDH0123	360.00	361.00	1.00	3.55	
ZDDH0123	383.00	384.00	1.00	0.78	

*For full results for holes ZDDH00001 to ZDDH00016, refer to Plukka Ltd Prospectus 30 October 2019. For results of ZDDH00017 to ZDDH00091 and ZDDH00095 refer to TSO:ASX announcements 6 March, 12 March, 27 April, 6 May, 27 May 2020, 10 June 2020, 26 August 2020, 4 September 2020, 9 October 2020, 23 October 2020, 4 November 2020, 24 November 2020, 16 December 2020, 22 December 2020, 11 January 2021, 27 January 2021, 19 February 2021, 5 March 2021, 23 March 2021, 29 March 2021, and 29 April 2021

APPENDIX 2 – DRILL HOLE DETAILS

Hole ID	Hole Location			Hole Orientation		Drill Depth (m)
	Northing	Easting	Elevation	Dip	Azimuth	
ZDDH00028	7036049	341605	581	-60	240	220.60
ZDDH00029	7036351	341849	603	-60	240	250.00
ZDDH00030	7036061	341676	569	-60	240	250.00
ZDDH00031	7036290	341875	605	-60	240	320.00
ZDDH00032	7036047	341757	584	-60	60	285.90
ZDDH00033	7036305	341846	599	-60	240	205.00
ZDDH00034	7036149	341781	579	-60	240	220.60
ZDDH00035	7036349	341876	612	-60	240	283.20
ZDDH00036	7036169	341840	597	-60	240	280.30
ZDDH00037	7036387	341829	624	-60	240	230.00
ZDDH00038	7036118	341693	584	-60	240	299.30
ZDDH00039	7036452	341942	658	-60	240	310.00
ZDDH00040	7036257	341878	607	-60	240	300.00
ZDDH00041	7036092	341621	591	-60	240	200.00
ZDDH00042	7036595	341800	610	-60	240	201.00
ZDDH00043	7036203	341796	584	-60	240	250.00
ZDDH00044	7036501	341643	588	-60	240	308.20
ZDDH00045	7036243	341751	610	-60	240	271.20
ZDDH00046	7036220	341742	613	-60	240	260.00
ZDDH00047	7036100	341774	578	-60	240	320.00
ZDDH00048	7036298	341760	615	-60	240	230.00
ZDDH00049	7036228	341897	626	-60	240	300.00
ZDDH00050	7036327	341767	631	-60	240	250.00
ZDDH00051	7036127	341955	646	-60	240	364.40
ZDDH00052	7036144	341740	601	-60	240	200.00
ZDDH00053	7036251	341821	588	-60	240	300.00
ZDDH00054	7036573	341763	607	-60	240	350.00
ZDDH00055	7036235	341843	609	-60	240	341.00
ZDDH00056	7036538	341927	640	-60	240	305.30
ZDDH00057	7036231	341842	605	-60	60	360.50
ZDDH00058	7036484	341928	654	-60	240	300.00
ZDDH00059	7036189	341929	636	-60	240	320.00
ZDDH00060	7036348	341872	618	-60	60	290.00
ZDDH00061	7036499	341765	605	-60	240	299.40
ZDDH00062	7036333	341803	624	-60	240	300.00
ZDDH00063	7036466	341895	637	-60	60	337.30
ZDDH00064	7036096	341836	604	-60	240	326.80
ZDDH00065	7036542	341918	636	-60	60	269.30
ZDDH00066	7035966	341793	616	-60	60	474.80
ZDDH00067	7036389	341781	647	-60	240	306.80
ZDDH00068	7036371	341744	627	-60	240	323.00
ZDDH00069	7036094	341834	602	-60	60	426.70
ZDDH00070	7036397	341858	628	-60	240	294.20
ZDDH00071	7036112	341610	582	-60	240	223.20
ZDDH00072	7035932	341845	595	-60	60	450.70
ZDDH00073	7035917	341646	546	-60	60	290.20
ZDDH00074	7035972	341594	578	-60	240	257.20
ZDDH00075	7036167	341849	608	-60	60	354.80
ZDDH00076	7036607	341827	602	-60	60	320.66
ZDDH00077	7036179	341615	570	-60	240	225.00
ZDDH00078	7036053	341845	620	-60	60	423.90
ZDDH00079	7036268	341836	588	-60	60	302.00
ZDDH00080	7035745	341887	563	-60	60	419.50
ZDDH00081	7036142	341851	604	-60	240	322.70
ZDDH00082	7035610	341443	525	-60	60	370.20
ZDDH00083	7036088	341903	637	-60	240	455.80
ZDDH00084	7036417	341934	641	-60	60	262.70
ZDDH00085	7036324	341907	625	-60	240	362.90
ZDDH00086	7035715	341528	501	-60	60	200.00
ZDDH00087	7036455	341940	662	-60	60	252.60
ZDDH00088	7035878	341656	565	-60	240	226.90
ZDDH00089	7036129	341949	655	-60	60	332.00
ZDDH00090	7036258	341871	619	-60	60	358.00
ZDDH00091	7036002	341575	583	-60	240	210.20
ZDDH00092	7036358	341935	636	-60	60	407.40
ZDDH00093	7036124	341810	594	-60	240	319.00
ZDDH00094	7036185	341764	594	-60	240	361.50
ZDDH00095	7036630	341444	633	-60	60	226.30
ZDDH00096	7036349	341706	606	-60	240	268.90
ZDDH00097	7035954	341633	560	-6	240	184.00
ZDDH00098	7036389	341871	361	-60	240	331.70
ZDDH00099	7036199	341870	596	-60	240	301.60
ZDDH00100	7036354	341801	636	-60	240	280.20
ZDDH00101	7036227	341892	615	-60	60	317.00
ZDDH00102	7035940	341996	635	-60	60	347.00
ZDDH00103	7036308	341726	606	-60	240	293.00
ZDDH00104	7036336	341992	660	-60	60	375.60
ZDDH00105	7036411	342036	695	-60	60	257.30
ZDDH00106	7036124	341880	613	-60	60	294.00
ZDDH00107	7036193	341925	632	-60	60	444.20
ZDDH00108	7036386	341972	670	-60	60	294.30
ZDDH00109	7036044	341891	632	-60	240	315.30
ZDDH00110	7036277	341916	623	-60	60	295.50
ZDDH00111	7036486	341928	659	-60	60	300.10
ZDDH00112	7036013	341871	636	-60	60	320.00
ZDDH00113	7036042	341885	632	-60	60	287.00
ZDDH00114	7036379	341916	624	-60	60	339.40
ZDDH00115	7035873	342038	621	-60	60	362.50
ZDDH00116	7035998	341961	685	-60	60	289.10
ZDDH00117	7036306	341968	613	-60	60	357.40
ZDDH00118	7036603	341939	659	-60	60	245.40
ZDDH00119	7036357	342134	646	-60	240	384.40
ZDDH00120	7036005	341906	637	-60	240	433.60
ZDDH00121	7036435	341981	646	-60	60	309.80
ZDDH00122	7036019	341541	574	-60	240	200.00
ZDDH00123	7036211	341913	631	-60	60	283.50
ZDDH00124	7036175	341897	625	-60	240	199.50
ZDDH00125	7036292	342113	677	-60	240	175.10
ZDDH00126	7035876	341647	560	-60	60	470.50
ZDDH00127	7036521	341933	647	-60	60	311.60
ZDDH00128	7035932	341845	596	-60	240	293.00
ZDDH00129	7036229	342096	664	-60	240	410.20
ZDDH00130	7035800	341644	544	-60	60	395.30
ZDDH00131	7036050	341850	618	-60	240	470.20
ZDDH00132	7036687	342156	712	-60	240	310.50
ZDDH00133	7035850	341604	551	-60	60	451.20
ZDDH00134	7036413	342231	638	-60	240	400.00
ZDDH00135	7036590	342166	708	-60	240	390.40
ZDDH00136	7035900	341697	578	-60	60	353.00
ZDDH00137	7036628	342156	705	-60	240	368.30
ZDDH00138	7036506	342306	643	-60	240	367.20
ZDDH00139	7036029	341683	571	60	240	277.80
ZDDH00140	7036578	342260	664	-60	240	362.30
ZDDH00141	7035863	341876	614	-60	240	56.50
ZDDH00142	7036000	341755	586	-60	240	400.00
ZDDH00143	7036305	341939	618	-60	240	326.40
ZDDH00144	7036365	341915	628	-60	60	325.25
ZDDH00145	7036339	341958	639	-60	240	371.00
ZDDH00146	7036304	341933	635	-60	60	441.00
ZDDH00147	7036187	341806	586	-60	240	290.00
ZDDH00148	7036110	341750	573	-60	240	174.00
ZDDH00149	7036431	342435	646	-60	240	226.80
ZDDH00150	7036176	341706	606	-60	240	142.00

Drill hole details for holes completed at El Zorro by Tesoro since February 2020. Co-ordinate system is PSAD56-19S.

APPENDIX 3 – JORC TABLES

JORC Table 1

Section 1: Sampling Techniques and Data

Criteria	JORC Code explanation	Commentary
Sampling techniques	<ul style="list-style-type: none"> Nature and quality of sampling (e.g. cut channels, random chips, or specific specialised industry standard measurement tools appropriate to the minerals under investigation, such as downhole gamma sondes, or handheld XRF instruments, etc.). These examples should not be taken as limiting the broad meaning of sampling. 	<p>Tesoro has completed 150 diamond drill holes for 47,208m in 2017, 2018, 2020 and 2021 (ZDDH0001 to ZDDH00150). Diamond drill holes were drilled with HQ. Sampling was half core at geologically defined and significant mineralisation boundaries.</p> <p>Tesoro considers the sampling methodologies to be appropriate for this style of mineralisation.</p>
	<ul style="list-style-type: none"> Include reference to measures taken to ensure sample representivity and the appropriate calibration of any measurement tools or systems used. 	<p>Tesoro Diamond drill holes were drilled with HQ. Sampling was half core at geological and significant mineralisation boundaries. Tesoro consider this appropriate for the style of mineralisation.</p>
	<ul style="list-style-type: none"> Aspects of the determination of mineralisation that are Material to the Public Report. In cases where 'industry standard' work has been done, this would be relatively simple (e.g. 'reverse circulation drilling was used to obtain 1 m samples from which 3 kg was pulverised to produce a 30 g charge for fire assay'). In other cases, more explanation may be required, such as where there is coarse gold that has inherent sampling problems. Unusual commodities or mineralisation types (e.g. submarine nodules) may warrant disclosure of detailed information. 	<p>Diamond drilling was used to obtain ½ core samples of various lengths (minimum 0.25m), from which 1kg of material was pulverised passing 200 mesh to produce a 50g charge for fire assay fusion with a gravimetric finish. Multielement assays were completed by 4-acid digest with a 2.5g charge. Tesoro consider these appropriate assay techniques.</p>
Drilling techniques	<ul style="list-style-type: none"> Drill type (e.g. core, reverse circulation, open-hole hammer, rotary air blast, auger, Bangka, sonic, etc.) and details (e.g. core diameter, triple or standard tube, depth of diamond tails, face-sampling bit or other type, whether core is oriented and if so, by what method, etc.). 	<p>Tesoro has completed 150 diamond drill holes for 47,208m. Diamond drill holes were drilled with HQ. Sampling was half core at geological and significant mineralisation boundaries. Standard tube was used.</p>
Drill sample recovery	<ul style="list-style-type: none"> Method of recording and assessing core and chip sample recoveries and results assessed. 	<p>Core recovery was estimated using the drillers recorded depth marks against the length of the core recovered. Reviewing the core photos, there are occasional shears/faults where core is broken. There is however no significant core loss.</p>
	<ul style="list-style-type: none"> Measures taken to maximise sample recovery and ensure representative nature of the samples. 	<p>A single tube system was employed and in general core recovery good.</p>
	<ul style="list-style-type: none"> Whether a relationship exists between sample recovery and grade and whether sample bias may have occurred due to preferential loss/gain of fine/coarse material. 	<p>There appears to be no potential sample bias as there was no regular loss of core.</p>
Logging	<ul style="list-style-type: none"> Whether core and chip samples have been geologically and geotechnically logged to a level of detail to support appropriate Mineral Resource estimation, mining studies and metallurgical studies. 	<p>Geological core logging to a resolution of 25 cm was undertaken with a record kept of, inter alia, colour, lithology, weathering, grain size, mineralisation, alteration, geotechnical characteristics etc. Diamond core is stored at the Company's warehouse.</p> <p>Tesoro consider the data to be of an appropriate level of detail to support a future resource estimation.</p>
	<ul style="list-style-type: none"> Whether logging is qualitative or quantitative in nature. Core (or costean, channel, etc.) photography. 	<p>Logging of diamond core was qualitative and diamond core was photographed.</p>
	<ul style="list-style-type: none"> The total length and percentage of the relevant intersections logged. 	<p>All drilled intervals are logged and recorded.</p>
Subsampling techniques and sample preparation	<ul style="list-style-type: none"> If core, whether cut or sawn and whether quarter, half or all core taken. 	<p>Drill core was cut, and half core was collected for analysis</p>
	<ul style="list-style-type: none"> If non-core, whether riffled, tube sampled, rotary split, etc. and whether sampled wet or dry. 	<p>Tesoro has not completed any percussion drilling.</p>
	<ul style="list-style-type: none"> For all sample types, the nature, quality and appropriateness of the sample preparation technique. 	<p>Collection of half core ensured the nature, quality and appropriateness of the collected sample.</p>

Criteria	JORC Code explanation	Commentary
		The sample preparation of crushing half core at the lab to mm size prior to splitting off a 50g charge (either by cone/quarter or riffle) for pulverisation provides an appropriate and representative sample for analysis.
	<ul style="list-style-type: none"> Quality control procedures adopted for all subsampling stages to maximise representivity of samples. 	Half core was collected for the entirety of the Tesoro drilling, as such there was consistency throughout the drilling. Core was logged by a qualified geoscientist. Each subsample is considered to be representative of the interval.
	<ul style="list-style-type: none"> Measures taken to ensure that the sampling is representative of the in-situ material collected, including for instance results for field duplicate/second-half sampling. 	Sampling of half core is representative of the in-situ material. There are field duplicate samples collected from the diamond core with irregular results. Field drill core duplicates are irregular by nature and it has been recommended by Tesoro's consultants to use coarse reject material to monitor the sample preparation.
	<ul style="list-style-type: none"> Whether sample sizes are appropriate to the grain size of the material being sampled. 	sample sizes collected were considered appropriate to reasonably represent the material being tested.
Quality of assay data and laboratory tests	<ul style="list-style-type: none"> The nature, quality and appropriateness of the assaying and laboratory procedures used and whether the technique is considered partial or total. 	Assays reported in this report were undertaken at the accredited laboratory of ALS Santiago, which is fully certified. Core samples of various lengths were assayed (minimum 0.25m) from which 1kg of material was pulverized passing 200 mesh to produce a 50 g charge for fire assay fusion with gravimetric finish. Multielement assays were completed by 4-acid digest with a 2.5 g charge. All techniques are appropriate for the element being determined.
	<ul style="list-style-type: none"> For geophysical tools, spectrometers, handheld XRF instruments, etc., the parameters used in determining the analysis including instrument make and model, reading times, calibrations factors applied and their derivation, etc. 	Standard chemical analyses were used for grade determination. There was no reliance on determination of analysis by geophysical tools.
	<ul style="list-style-type: none"> Nature of quality control procedures adopted (e.g. standards, blanks, duplicates, external laboratory checks) and whether acceptable levels of accuracy (i.e. lack of bias) and precision have been established. 	QAQC procedures included the insertion of Certified Reference Materials (CRMs) (5%) and blank material (2%). Check samples (5%) and check assaying 5% Cube Consulting Pty Ltd manage the database for Tesoro. The laboratories used have generally demonstrated analytical accuracy at an acceptable level within 95% confidence limits.
Verification of sampling and assaying	<ul style="list-style-type: none"> The verification of significant intersections by either independent or alternative company personnel. 	A number of independent consulting geoscientists (Cube Consulting, Oliver, and Cooley) external to Tesoro have verified the intersections for holes ZDDH0001 to ZDDH0080. Holes ZDDH0081 onwards have been verified by multiple appropriately qualified Company personnel.
	<ul style="list-style-type: none"> The use of twinned holes. 	no twinned holes have been completed
	<ul style="list-style-type: none"> Documentation of primary data, data entry procedures, data verification, data storage (physical and electronic) protocols. 	Tesoro drilling is digitally entered and stored following documented core handling protocols. The protocols are considered adequate.
	<ul style="list-style-type: none"> Discuss any adjustment to assay data. 	No adjustments were made to Tesoro Drilling
Location of data points	<ul style="list-style-type: none"> Accuracy and quality of surveys used to locate drillholes (collar and downhole surveys), trenches, mine workings and other locations used in Mineral Resource estimation. 	Tesoro drill hole collars have been surveyed accurately using differential GPS for holes ZDDH0001 to ZDDH00080. Holes ZDDH0081 onwards have been surveyed using handheld GPS and will be surveyed using differential GPS once the drill program has concluded.
	<ul style="list-style-type: none"> Specification of the grid system used. 	The grid system used PSAD56 19S
	<ul style="list-style-type: none"> Quality and adequacy of topographic control. 	The topography generated from an accurate topographic survey data completed by a registered surveyor and has been used for the current control.
Data spacing and distribution	<ul style="list-style-type: none"> Data spacing for reporting of Exploration Results. 	Drill hole spacing is variable between 25m and 200m
	<ul style="list-style-type: none"> Whether the data spacing and distribution is sufficient to establish the degree of geological and grade continuity appropriate for the Mineral Resource and Ore Reserve estimation procedure(s) and classifications applied. 	The spacing of drill holes is variable and satisfactory for reconnaissance level drilling. The holes are not intended to be used for resource estimates at this stage of exploration.
	<ul style="list-style-type: none"> Whether sample compositing has been applied. 	Sample composites was not employed.
Orientation of data in relation to geological structure	<ul style="list-style-type: none"> Whether the orientation of sampling achieves unbiased sampling of possible structures and the extent to which this is known, considering the deposit type. 	Drill holes were drilled across the interpreted strike of the mineralization

Criteria	JORC Code explanation	Commentary
	<ul style="list-style-type: none"> If the relationship between the drilling orientation and the orientation of key mineralised structures is considered to have introduced a sampling bias, this should be assessed and reported if material. 	Tesoro diamond drilling at various orientations does not reveal any bias regarding the orientation of the mineralised horizons.
Sample security	<ul style="list-style-type: none"> The measures taken to ensure sample security. 	Chain of Custody of digital data is managed by the Company. Physical material was stored on site and, when necessary, delivered to the assay laboratory. Thereafter laboratory samples were controlled by the nominated laboratory which to date has been Bureau Veritas and ALS Santiago. All sample collection was controlled by digital sample control file(s) and hardcopy ticket books.
Audits or reviews	<ul style="list-style-type: none"> The results of any audits or reviews of sampling techniques and data. 	No audits have been undertaken.

(Criteria in this section apply to all succeeding sections)

Section 2: Reporting of Exploration Results

(Criteria listed in the preceding section also apply to this section)

Criteria	JORC Code explanation	Commentary
Mineral tenement and land tenure status	<ul style="list-style-type: none"> Type, reference name/number, location and ownership including agreements or material issues with third parties such as joint ventures, partnerships, overriding royalties, native title interests, historical sites, wilderness or national park and environmental settings. 	Information regarding tenure is included in the company's December 2020 half yearly report released to the ASX on 12 March 2021. Tesoro Resources Ltd, 95% owned Chilean subsidiary, Tesoro Mining Chile SpA, owns 85% of the El Zorro Gold Project Concessions.
	<ul style="list-style-type: none"> The security of the tenure held at the time of reporting along with any known impediments to obtaining a licence to operate in the area. 	The Concession is believed to be in good standing with the governing authority and there is no known impediment to operating in the area.
Exploration done by other parties	<ul style="list-style-type: none"> Acknowledgment and appraisal of exploration by other parties. 	Little historical exploration has been undertaken in either project area. Coeur d'Alene's Chilean exploration division undertook activities on the Ternera prospect, under an option agreement with the previous owners between April 1990 and January 1993.
Geology	<ul style="list-style-type: none"> Deposit type, geological setting and style of mineralisation. 	The mineralisation model is to likely to be intrusive related gold deposit. The key characteristics that are consistent with this style deposit include: <ul style="list-style-type: none"> Low sulphide content, (typically <5%); reduced ore mineral assemblage that typically comprises pyrite and lacks primary magnetite or hematite Mineralisation occurs as sheeted vein deposits or stockwork assemblages and often combine gold with variably elevated Bi, W, As, Mo, Te, and/or Sb but low concentrations of base metals as seen in the initial four holes by Tesoro at El Zorro Restricted and commonly weak proximal hydrothermal alteration Intrusions of intermediate to felsic composition.
Drillhole information	<ul style="list-style-type: none"> A summary of all information material to the understanding of the exploration results including a tabulation of the following information for all Material drillholes: <ul style="list-style-type: none"> easting and northing of the drillhole collar elevation or RL (Reduced Level – elevation above sea level in metres) of the drillhole collar dip and azimuth of the hole downhole length and interception depth hole length. If the exclusion of this information is justified on the basis that the information is not Material and this exclusion does not detract from the understanding of the report, the Competent Person should clearly explain why this is the case. 	Information relating to current drill program presented in this report.
Data aggregation methods	<ul style="list-style-type: none"> In reporting Exploration Results, weighting averaging techniques, maximum and/or minimum grade truncations (e.g. cutting of 	No cutting of grades has been undertaken at this early stage of exploration drilling. Downhole intercepts are calculated using a length weighted averaging method.

Criteria	JORC Code explanation	Commentary
	<i>high grades) and cut-off grades are usually Material and should be stated.</i>	
	<ul style="list-style-type: none"> Where aggregate intercepts incorporate short lengths of high grade results and longer lengths of low grade results, the procedure used for such aggregation should be stated and some typical examples of such aggregations should be shown in detail. 	<p>All individual results for holes ZDDH00001 to ZDDH00016 are reported in prospectus dated 30th October 2019 lodged by Plukka Ltd.</p> <p>Down hole length weighted average results are calculated using a 0.20g/t Au cut off and a maximum of 5m internal dilution</p>
	<ul style="list-style-type: none"> The assumptions used for any reporting of metal equivalent values should be clearly stated. 	No metal equivalents are reported.
Relationship between mineralisation widths and intercept lengths	<ul style="list-style-type: none"> These relationships are particularly important in the reporting of Exploration Results. 	
	<ul style="list-style-type: none"> If the geometry of the mineralisation with respect to the drillhole angle is known, its nature should be reported. 	The mineralisation forms sub-vertical sheeted veins and individual veins and may form plunging zones within the mineralised structures. Drilling by Tesoro has been undertaken to test these orientations.
	<ul style="list-style-type: none"> If it is not known and only the downhole lengths are reported, there should be a clear statement to this effect (e.g. 'downhole length, true width not known'). 	Exploration results are reported as downhole widths as the true width is not known with any certainty.
Diagrams	<ul style="list-style-type: none"> Appropriate maps and sections (with scales) and tabulations of intercepts should be included for any significant discovery being reported. These should include, but not be limited to a plan view of drillhole collar locations and appropriate sectional views. 	Relevant maps and diagrams are included in the body of the report.
Balanced reporting	<ul style="list-style-type: none"> Where comprehensive reporting of all Exploration Results is not practicable, representative reporting of both low and high grades and/or widths should be practiced to avoid misleading reporting of Exploration Results. 	All assay results from drilling are reported. Reporting of visible gold occurrences in drill core is by visual inspection only and final gold content is not known until assay results have been received.
Other substantive exploration data	<ul style="list-style-type: none"> Other exploration data, if meaningful and material, should be reported including (but not limited to): geological observations; geophysical survey results; geochemical survey results; bulk samples – size and method of treatment; metallurgical test results; bulk density, groundwater, geotechnical and rock characteristics; potential deleterious or contaminating substances. 	All material exploration data is reported in the body of the report.
Further work	<ul style="list-style-type: none"> The nature and scale of planned further work (e.g. tests for lateral extensions or depth extensions or large-scale step-out drilling). 	Further work will be focused on drill testing the Ternera mineralisation and additional prospects as defined in the work program. Core will be used for metallurgical testwork and resource modelling is planned.
	<ul style="list-style-type: none"> Diagrams clearly highlighting the areas of possible extensions, including the main geological interpretations and future drilling areas, provided this information is not commercially sensitive. 	Diagrams have been included in the body of this report.